

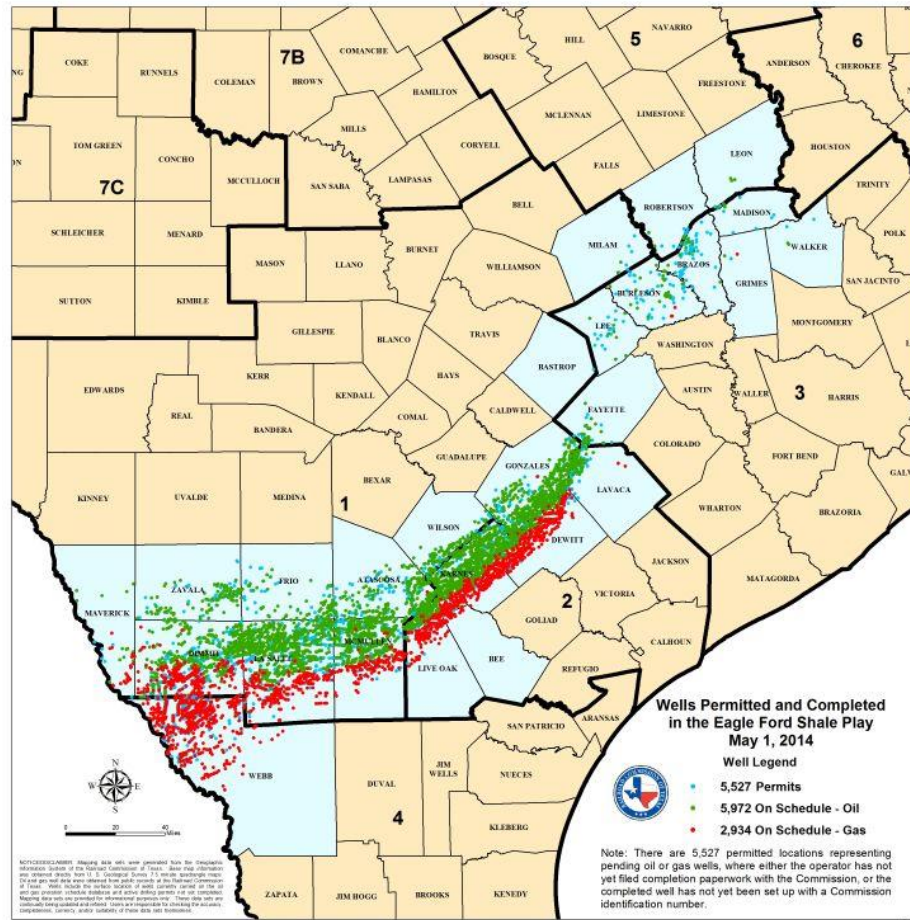
DeWitt County, Texas

FY 2015 Budget Presentation

Eagle Ford Shale

- Eagle Ford Shale continues to be a game changer for DeWitt County
- 125 RRC well permits in 2010
- 515 RRC well permits issued in 2013
- 363 wells completed (during last Texas FY)
- 500 permits are likely in 2014

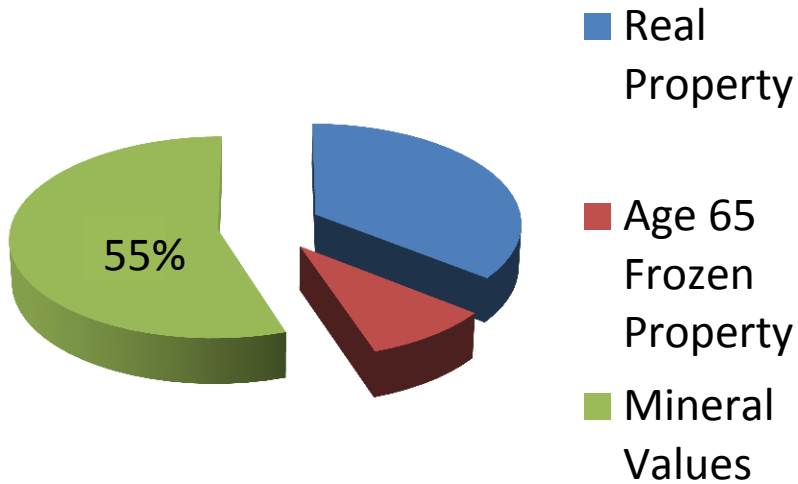
Development continues



Tax Base Comparison: Mineral Values

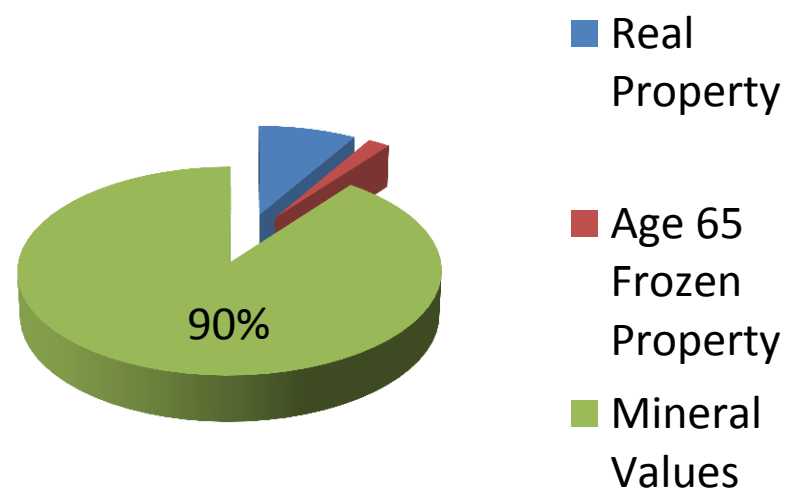
2011

Percentage of taxes paid



2014

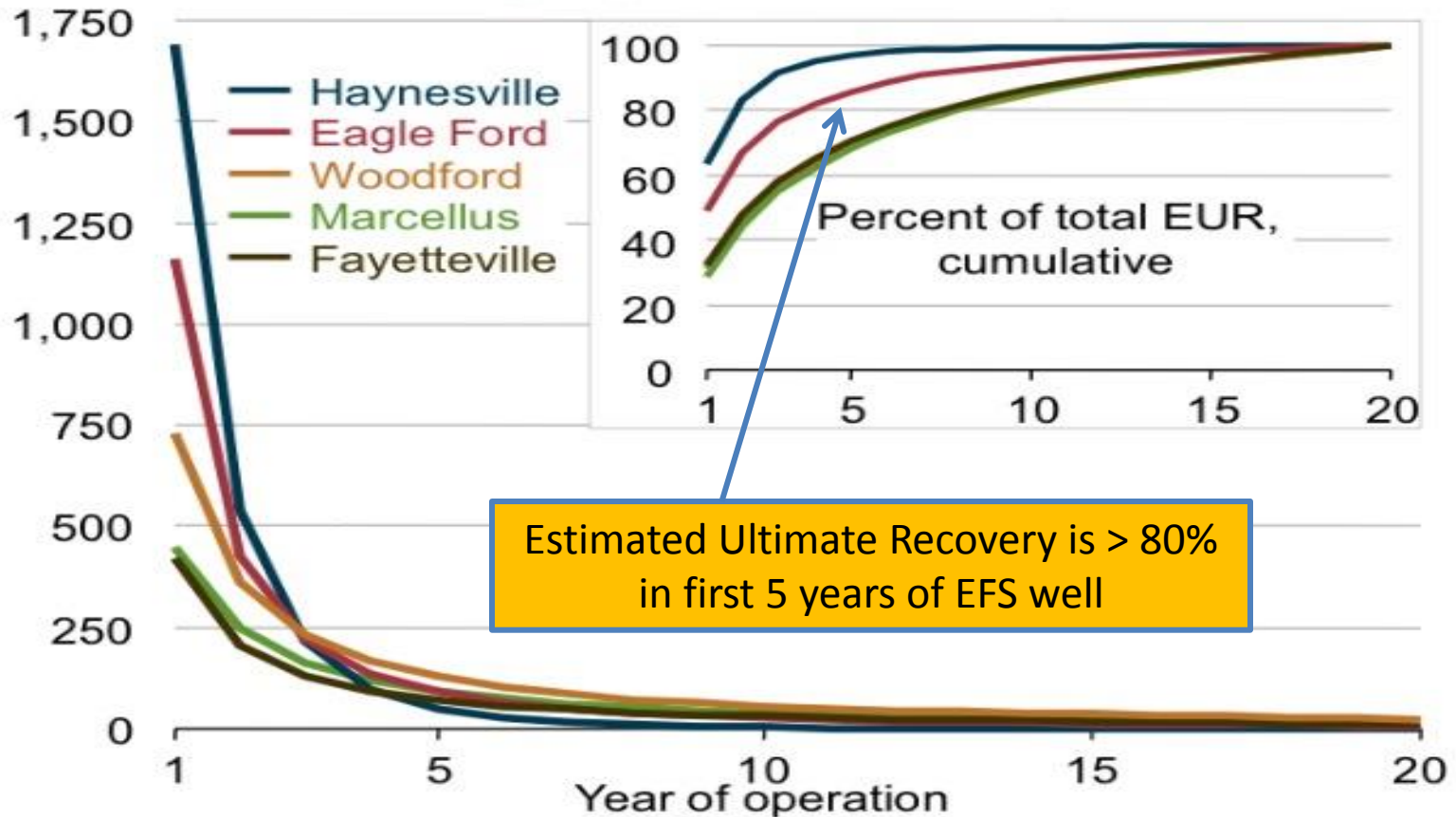
Percentage of taxes paid



- \$90 of every \$100 in property taxes to be paid by oil and gas interests based on 2014 tax roll
- \$1.92 of every \$100 will be collected from the Over 65 and Disabled homesteads

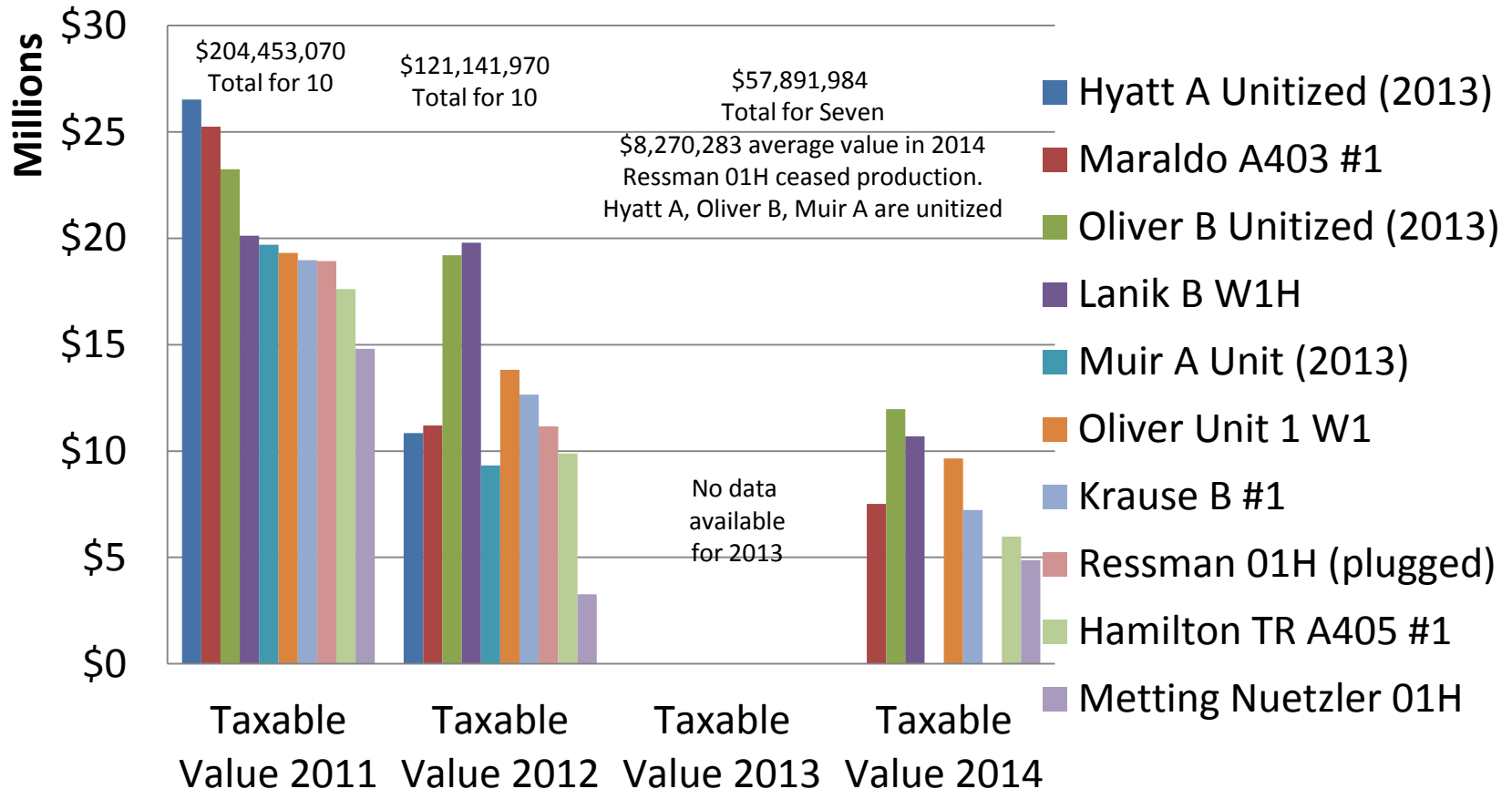
Typical Decline Curve of Shale Wells

Figure 54. Average production profiles for shale gas wells in major U.S. shale plays by years of operation (million cubic feet per year)



2011 Top 10 Producing Wells

72% value decline in four years of operation



EFS wells expected to produce 80-90% of EUR in the first 5 years