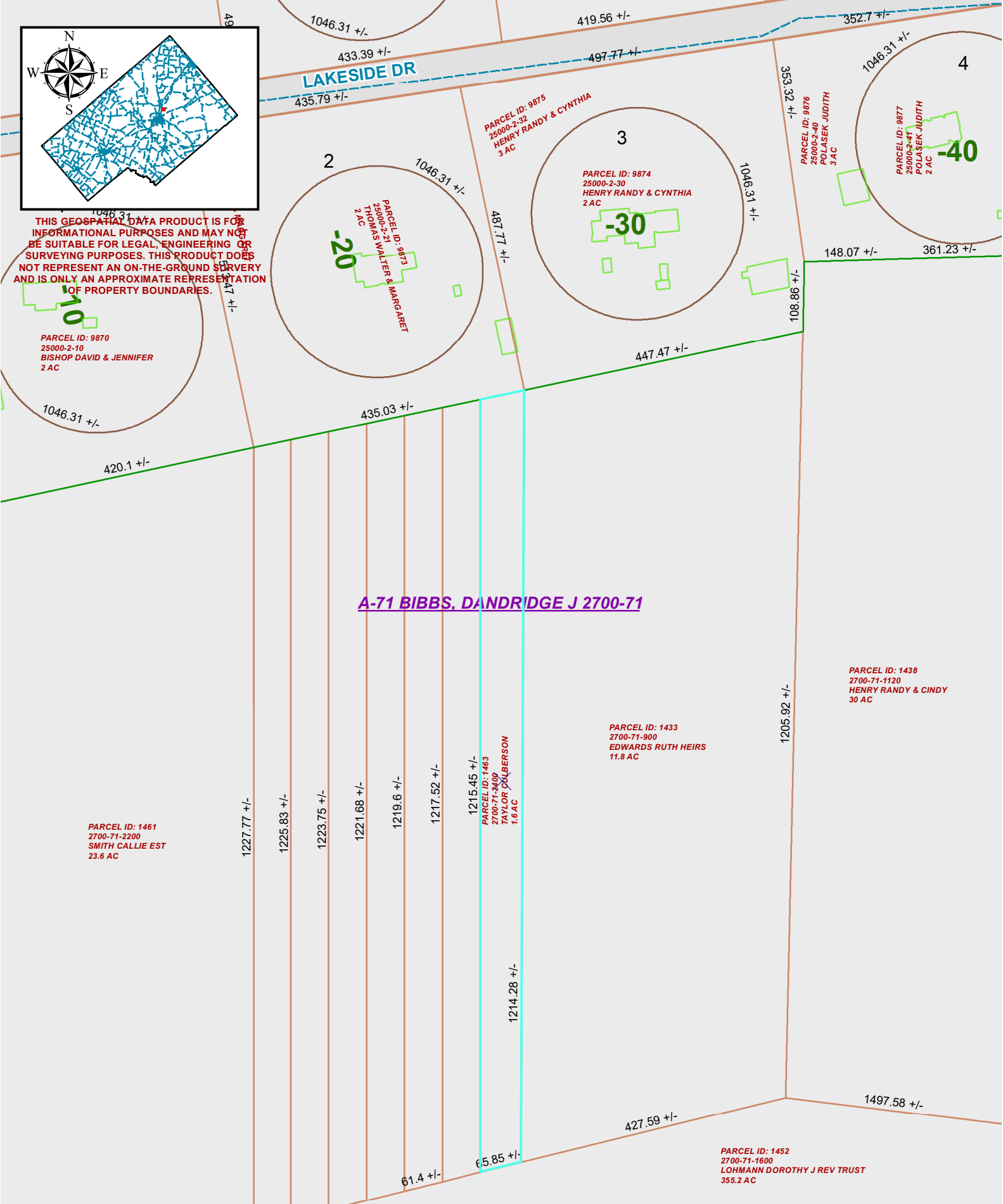
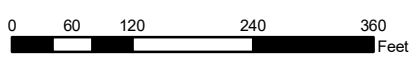


THIS GEOSPATIAL DATA PRODUCT IS FOR INFORMATIONAL PURPOSES AND MAY NOT BE SUITABLE FOR LEGAL, ENGINEERING OR SURVEYING PURPOSES. THIS PRODUCT DOES NOT REPRESENT AN ON-THE-GROUND SURVEY AND IS ONLY AN APPROXIMATE REPRESENTATION OF PROPERTY BOUNDARIES.



DeWitt County Appraisal District
 103 East Bailey St., Cuero, TX 77954
 P-361-275-5753 F-361-275-9227
 www.dewittcad.org Printed Date: 1/9/2020

1 inch = 191 feet



LEGEND

	Abstract		Buildings		York City Limit		Parcel
	Roads		Homestead		ROW		Parcel